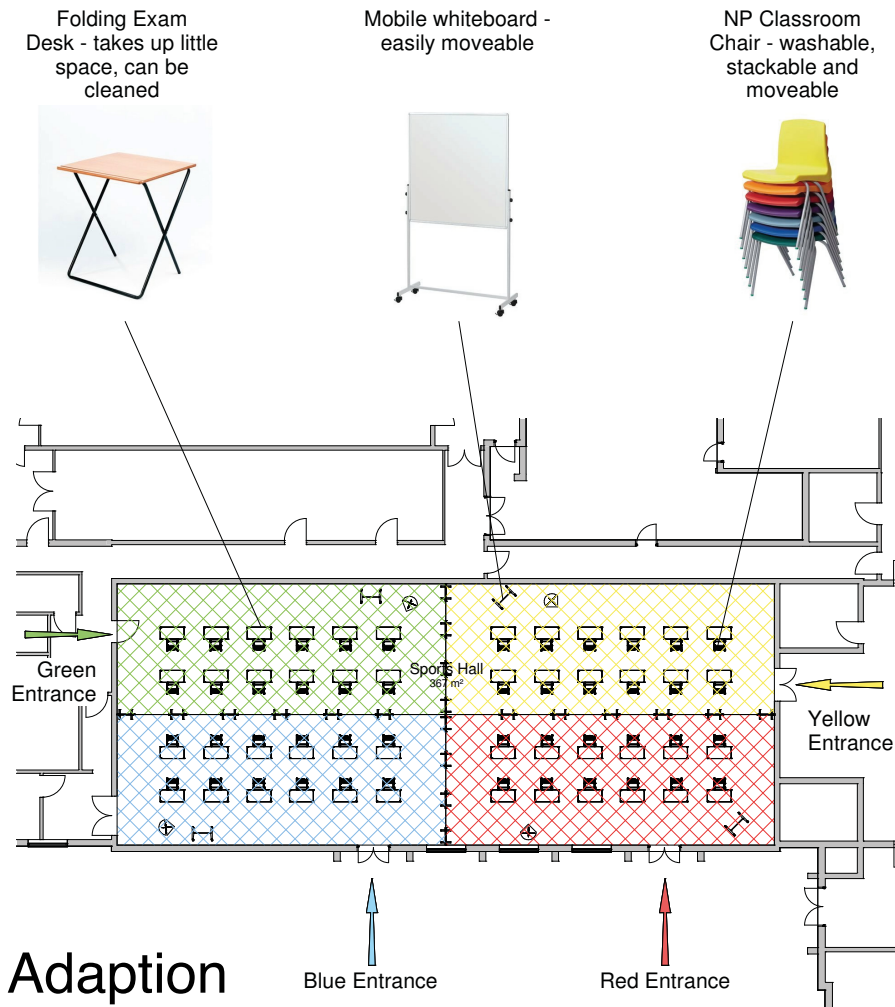
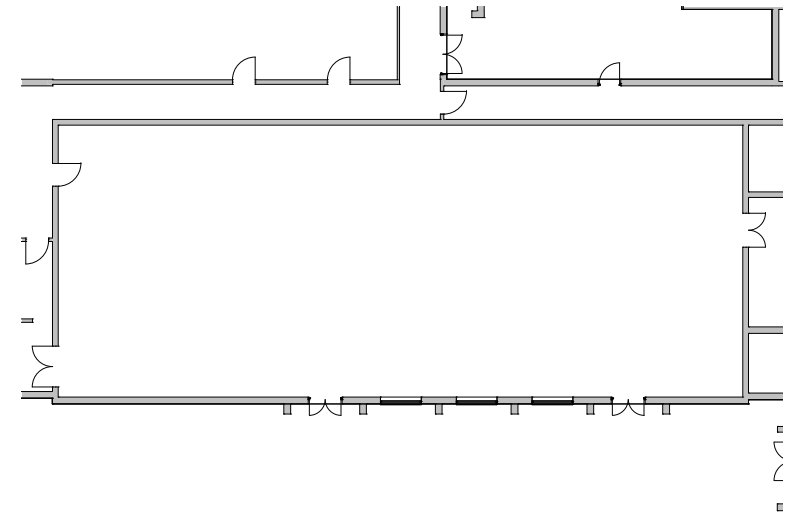


Utilising Unused Spaces - Sports Hall

Furniture Design Service



Original



Some areas which are normally empty and have multiple access points can be utilised differently to help provide the correct social distancing.

Sports halls, music practise areas, performance areas and dining halls can be split into spaces for larger groups to safely work.

Using screens and colour coded entrances can help to differentiate the areas for staff and children.