

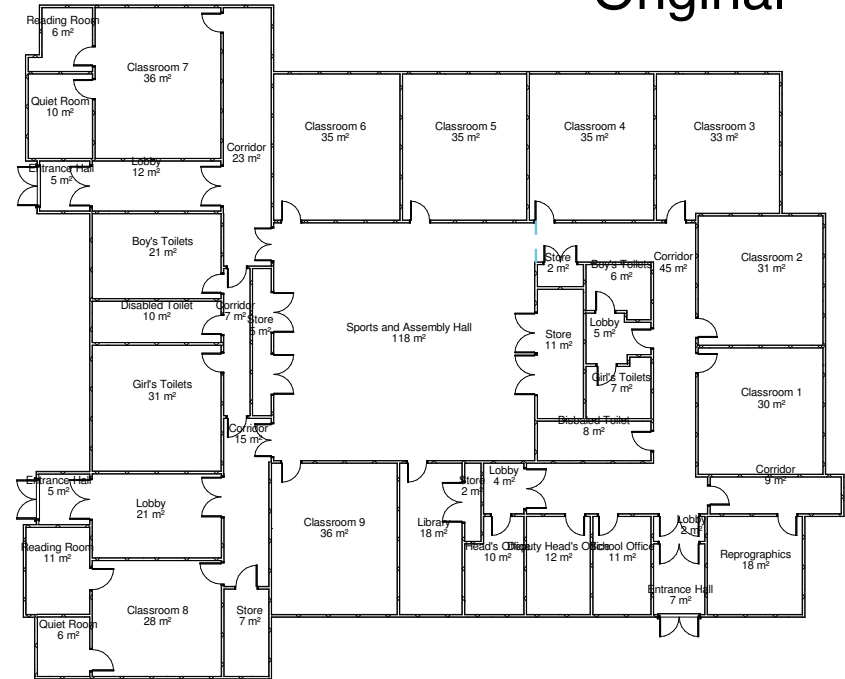
# School Entry and Exit Zoning

## Adaption



- Yellow Classrooms
- Green Classrooms
- Yellow and Red Shared Facilities
- Green and Orange Shared Facilities
- Red Classrooms
- Staff Areas and Offices

## Original



Schools will face the problem of restricting the number of children entering and exiting through the same doors. To minimise this we can:

- Zone the school by floor level.
- Give each zone a designated entrance, exit and route to follow.
- Use colours, animals, shapes or other themes to remind young children where they need to be.
- Ensure there are handwash stations on every entrance and exit door.
- Clean shared facilities more often.