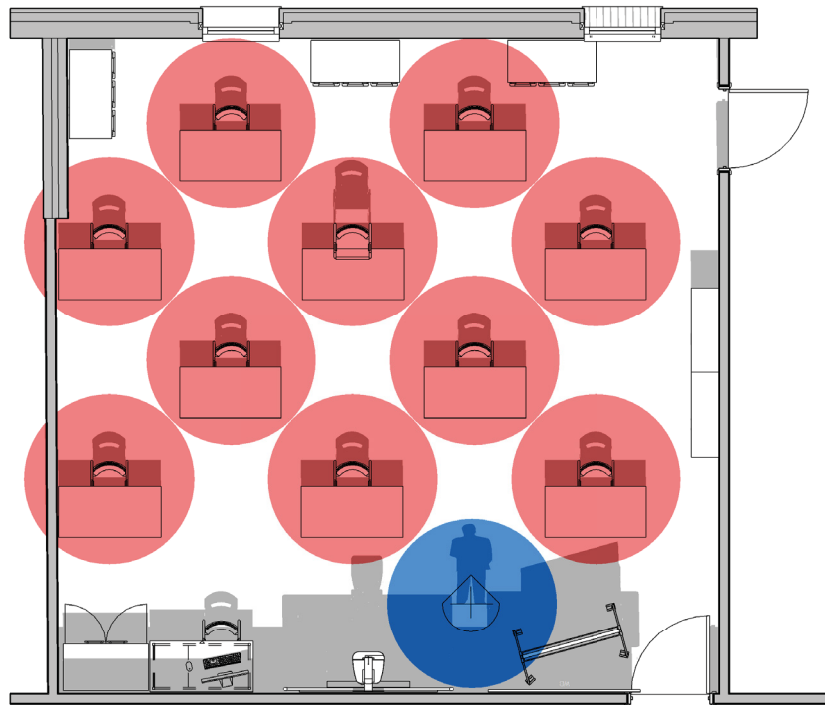




Adapting the Classroom - 10 Pupils

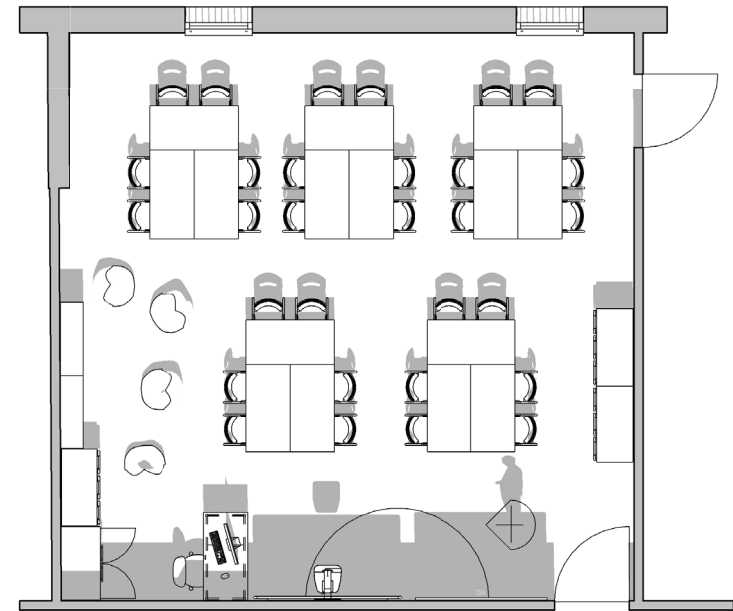
Schools with smaller rooms may consider 10 pupil classrooms, as the distance for 15 pupils may not be achieved.

Adaption



-  **1m Distance space - Pupils**
(per individual to meet 2m guidance).
-  **1m Distance space - Teacher**
(per individual to meet 2m guidance).

Original



Suggestions:

- Remove soft furnishings: bean bags, rugs, teachers' operator chair etc.
- Move storage to fit around the desk space once safe distance has been met.
- Consider mobile whiteboard to minimise student movement.
- Where a sink is not available, consider providing pupils with their own sanitising products.