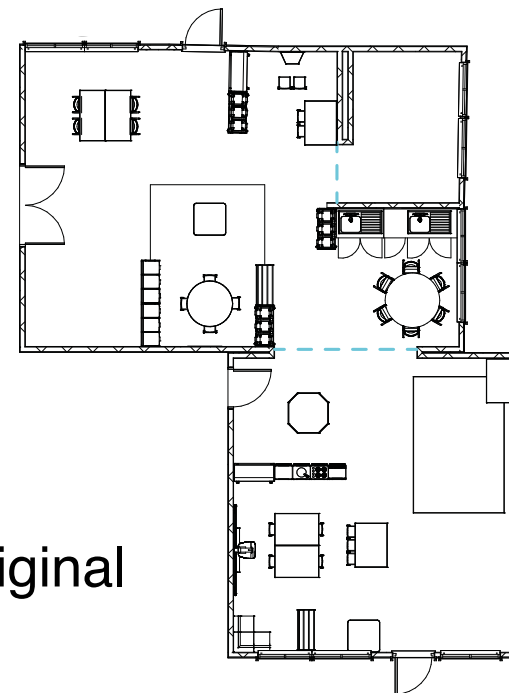


Adapting Early Years Indoor Spaces



Adaption

This zoning plan may be used in early years settings to meet government guidelines.



Original

Suggestions:

- Remove soft furnishings from classrooms and replace with wipeable vinyl if possible.
- Use screens or wipeable furniture to create smaller zones for limited numbers of children to play in. Avoid tall screens as these can be intimidating for small children.
- Include a sanitising station in every zone and help children to understand when and how to use it.
- Use themes such as colours or animals to differentiate each of the zones.
- Include easily wipeable toys such as small world tables and sitting area setting.
- Wipe all furniture between uses or as often as possible.